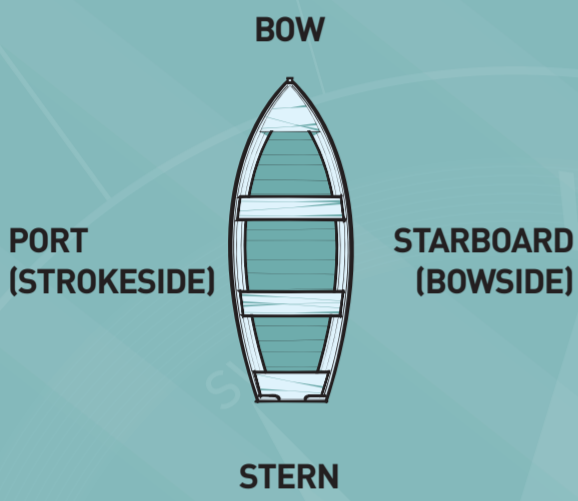


WATERCRAFT SAFETY ON LAKE BURLEY GRIFFIN TRAFFIC FLOW GUIDE



GENERAL PRINCIPLES

IN GENERAL

Boats must stay close to the shore line with the bank on their starboard side.

Always go counter clockwise.

Boats can use other lines with caution.

GIVE WAY

Overtaking vessel has a legal obligation to keep clear.

Give way to boats on your starboard side.

Powered vessels give way to all vessels.

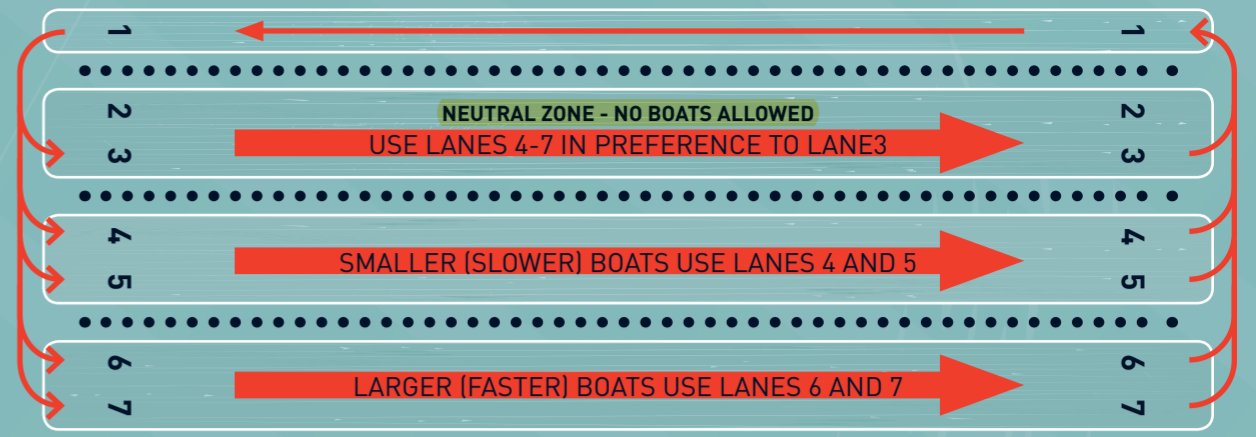
Human powered vessel give way to all sailing vessels.

APPROVED EVENTS

May implement competition rules which may vary slightly to this guide.

For further guidance refer to Part 5, Rules of preventing collisions on the lake, Lakes Ordinance 1976.

ROWING COURSE RULES



CAUTION KURRAJONG POINT

- Crews crossing to Black Mountain Peninsula must give way.
- Boats proceeding from Kurrajong Point to GIVE WAY to traffic traveling North along Tarcoola Reach.

CAUTION ROWING COURSE

- NO ROWING in lane 2.
- Boats proceeding to Start/ Scrivener Dam: row in lane 1, following course traffic guideline; coaching boats to minimize wash.
- Slower boats travelling to Scrivener Dam must give way to faster boats.
- Lanes 3-7 Traffic moving from start to finish. Powerboats permitted to keep pace with crews doing workloads in this direction.
- Boats passing behind the finish line area need to GIVE WAY to boats coming down course.
- Stationary boats on the rowing course must give way.
- Boats must travel down the course (away from Government House) in lanes 3-7 only. At no time should boats travel in lane 2 unless doing work and accompanied by a coaching boat.

CAUTION BLACK MOUNTAIN PENINSULA

- Area of merging traffic, keep to your starboard side.

CAUTION MUSEUM POINT

- Area of extreme caution; merging traffic, keep to your starboard side.
- Traffic from Springbank Island must observe caution moving to the shore.

CAUTION WEST BASIN

- Area of multiple uses, take care when entering.

MINIMUM LIGHTING RECOMMENDATIONS



MOTOR BOATS

Should have port and starboard lighting and white light visible from 360°.



PADDLERS/ROWERS

Should have solid white lights at bow and stern or a flashing white light visible from 360°.

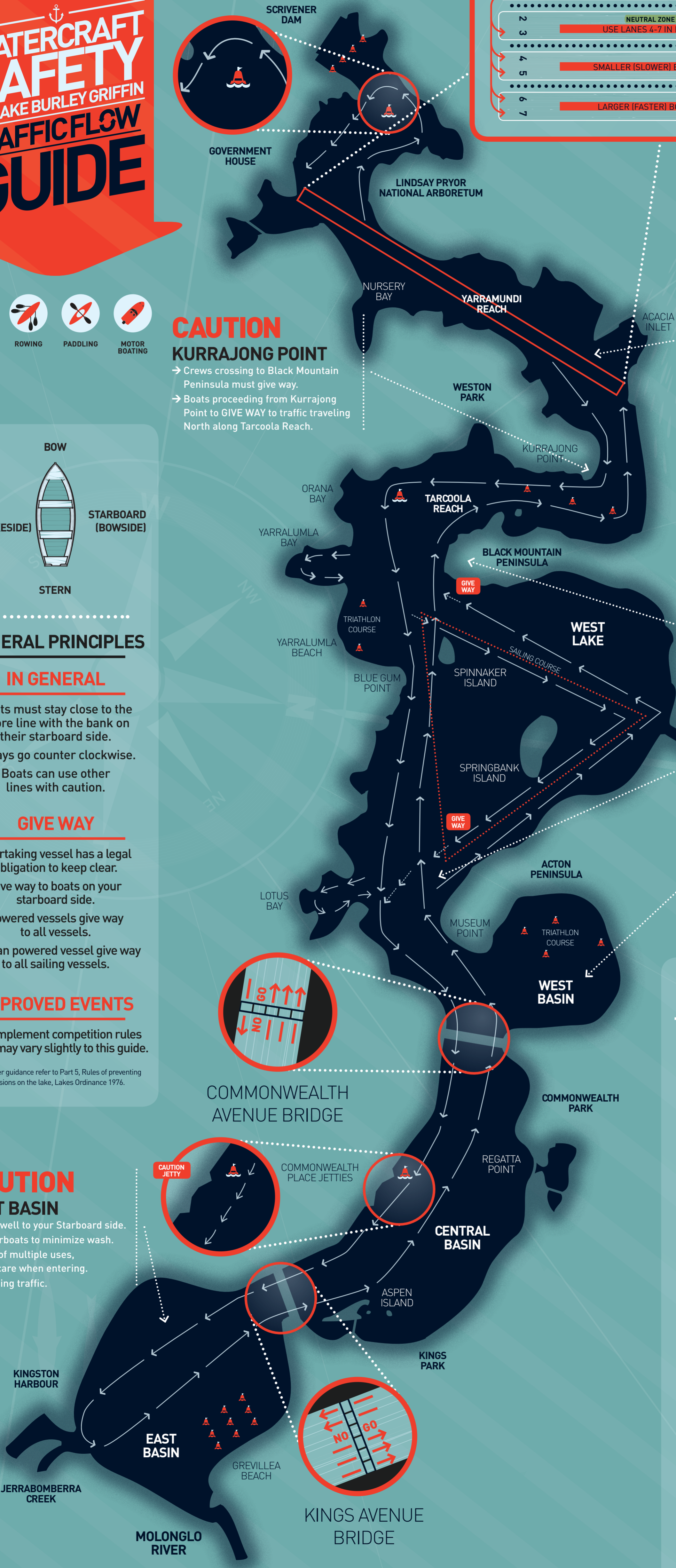


LIGHTS

Should be visible from 1500m in clear conditions.

CAUTION EAST BASIN

- Keep well to your Starboard side.
- Powerboats to minimize wash.
- Area of multiple uses, take care when entering.
- Crossing traffic.



EMERGENCY CONTACT: ACT WATER POLICE 6256 7777 OR 000

National Capital Authority (02) 6271 2888 www.nca.gov.au @nca_media nca.gov

